



GreenLab

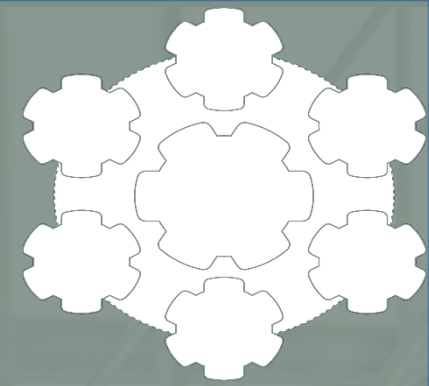
Rural Digitalization

GreenLab

GreenLab on Rural Digitalization

- »»» What is GreenLab
- »»» Biomass in GreenLab
- »»» Uncaptured value
- »»» GreenLab system and optimization
- »»» A ecosystem and innovation perspective

»»» What is GreenLab



The Site – GreenLab
Industrial Energy Park



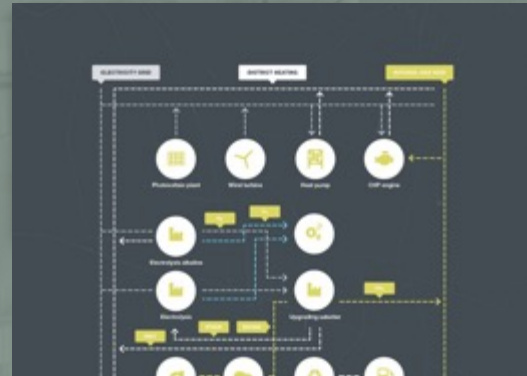
A green, full-scale P2X
and SymbiosisNet



International Innovation,
R&D accelerator



Global partnerships &
export development

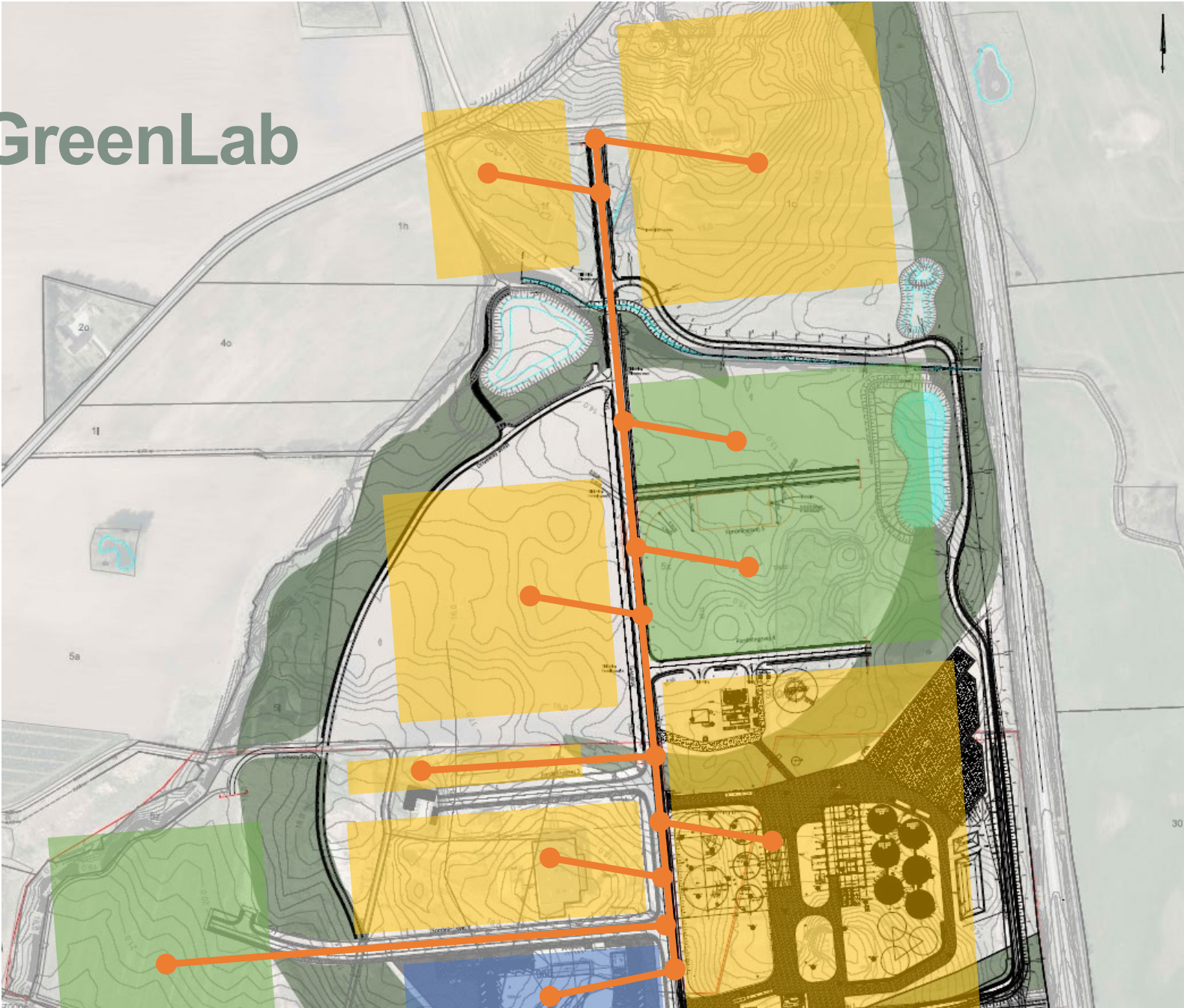


GreenLab combines green energy and intelligent technology in **the world's first truly green energy symbiosis**

GreenLab

Biomass in GreenLab

- Recycling
- Industrial partners
- Research and innovation
- SymbiosisNet



The site 60 ha. Equals 85 soccer fields

55 MW
windpark

Temporary
office

Raw biogas
biogenic
CO₂
source

Waste
handling
facility

Plastics to
circular
diesel

New
GreenLab
Building

Starfish
to
protein



Unique location between national gas and electricity grids and by Batum Salt Cavern

Phase 2:
300,000 m²
2022

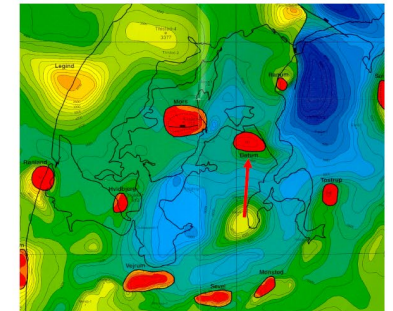
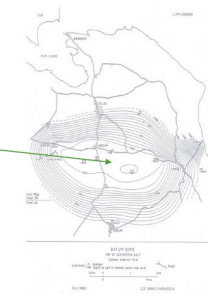
25MW
solar park
2021

P2X plots
electrolysis
refinery
tanks

Central
heating

Batum Salt Cavern - Skive

Initial preliminary report suggest no void in salt formation which is good but need confirmation



Batum Salt is 500 m deep and 60 m diameter (50 to 70 GWh energy storage)

Batum : 500 Height, 60 M Diameter??
From Surface 1500 M....?

Uncaptured Value

| Revenue streams | Description | Value capture |
|-----------------|---|---|
| BioValue | <p><i>GreenLab builds on circular economy principles that extend the lifecycle of raw biomass waste products by reusing them as input for energy creation</i></p> | <ul style="list-style-type: none">• Enhanced energy supply• Services: e.g. water treatment and logistics• CO2 capture |



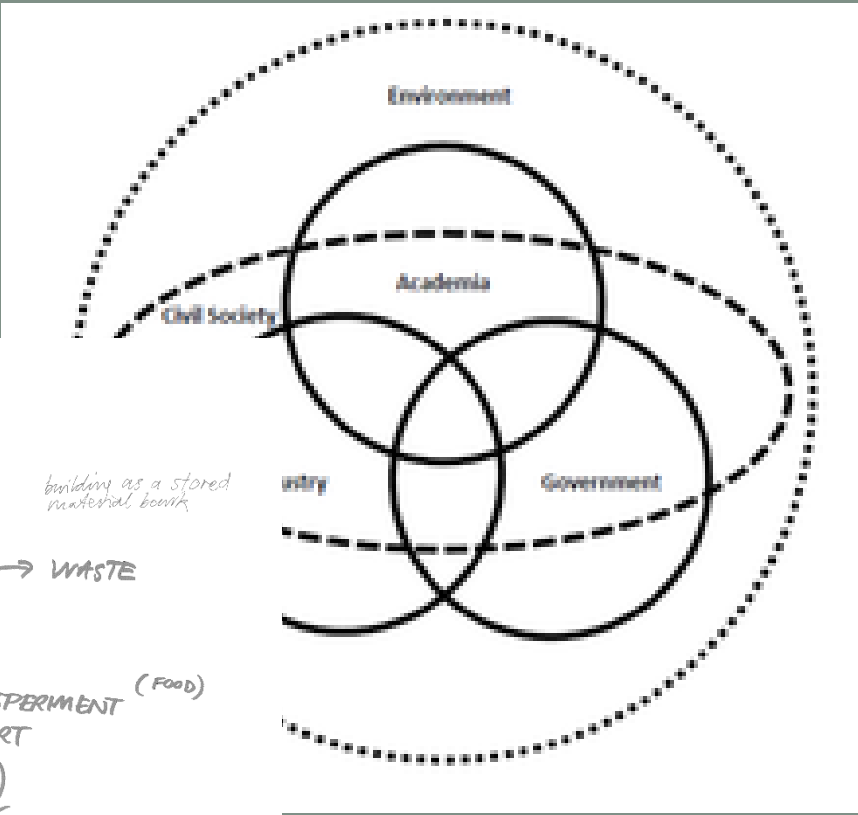
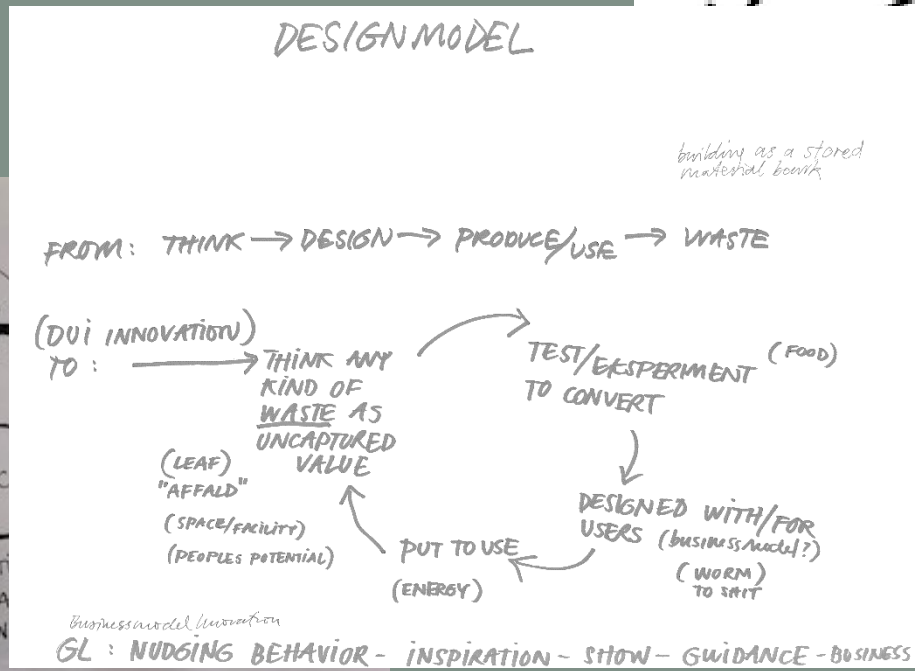
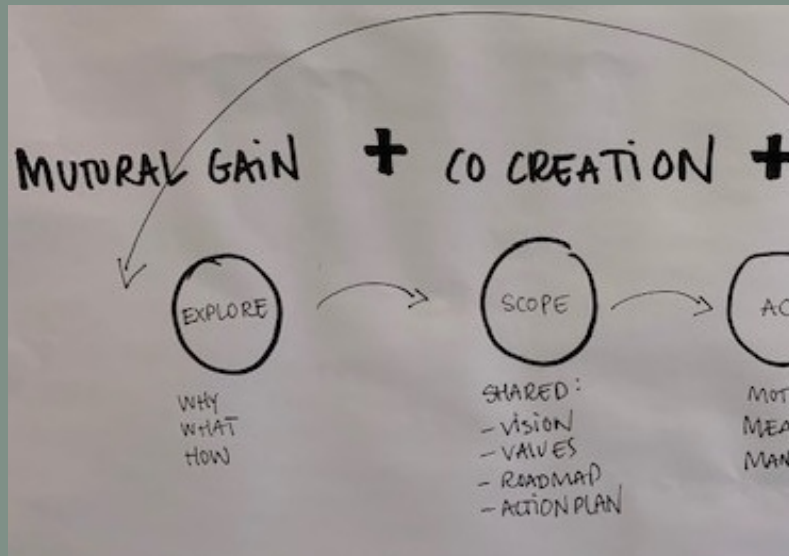
GreenLab system and optimization

| Revenue streams | Description | Value capture |
|------------------|--|---|
| BioValue | <i>GreenLab builds on circular economy principles that extend the lifecycle of raw biomass waste products by reusing them as input for energy creation</i> | <ul style="list-style-type: none"> • Enhanced energy supply • Services: e.g. water treatment and logistics • CO2 capture |
| MECO | <i>Smart algorithm ensuring resource optimization in Industrial Park and beyond.</i> | <ul style="list-style-type: none"> • Increase green production value. Energy trade and optimization platform • Subscription to smart algorithm service (SaaS) • Sell smart algorithm patented for use in intelligent energy projects |
| Knowledge Center | <i>Epicenter for green and intelligent energy. Open innovation platform for R&D and commercial actors. Development of high voltage education.</i> | <ul style="list-style-type: none"> • High voltage and other specialized education • Open innovation platform and data access • Sustainable leadership, publications and events |



A ecosystem and innovation perspective

- »»» Co-creation – aligning all levels
- »»» Top-down *and* bottom-up
- »»» Strategies for leadership with in sustainability
- »»» Methodology



Q & A

What if...

How
do
you
see..

»»» You and your role as part of
the circular economy ...

»»» Your plan for ...



Let's create a power shift!

GreenLab

By
Thea Lyng Thomsen
Consortium Developer
GreenLab