

From Design to Market

Tobias Landberg

Architect SAR/MSA, Breeam AP

Regional Manager & Principal Architect, Malmö

Ksenia Ryabchenko

Chief Project Architect, St Petersburg

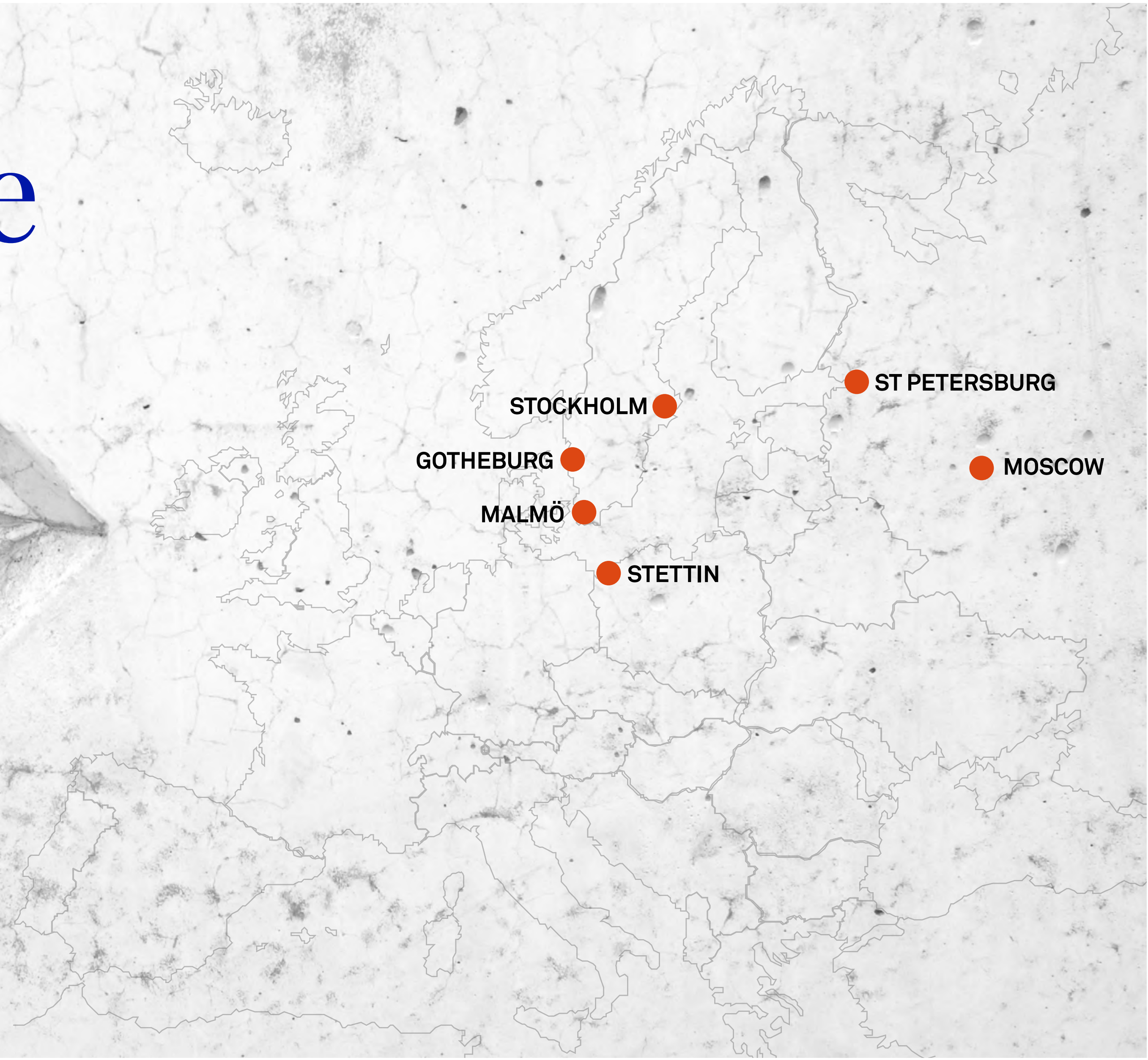
Semrén+
Månsson

Office Profile

Offices in 3 countries and 6 cities

Head Office in Gothenburg, Sweden

Approx. 230 employees



Office Profile

Offices in 3 countries and 6 cities

Head Office in Gothenburg, Sweden

Approx. 230 employees



RESIDENTIAL / HOUSING



WORKPLACE / OFFICES



MIXED-USE



HEALTH & WELLBEING



COMMERCIAL / RETAIL



URBAN PLANNING



PUBLIC BUILDINGS



INTERIOR DESIGN



EDUCATION & LEARNING

Office Collaboration

Swedish Design according
to Russian Regulation

~10 years of collaboration between Sweden & Russia



SOUTH CLUSTER TORPEDO, MOSCOW



GRAND HOTEL RODINA, SOCHI



ELDERLY HOUSE, MOSCOW



CENTRAL CLUSTER TORPEDO, MOSCOW

From Design to Market

why work with timber?

Sustainable
Flexible
Economic

From Design to Market

what are the challenges?

Fire & Acoustics
Regulation
Industry mindset



From Design to Market

what are the challenges?

Fire & Acoustics
Regulation
Industry mindset



From Design to Market

what are the challenges?

Fire & Acoustics
Regulation
Industry mindset



From Design to Market

what is the way forward?

- Apply a conscious approach
- Naturalize the timber structure
- Focus on the hybrid timber construction

From Design to Market

how do we create potential?

Nordic Design Know-How with Russian Regulations
Enhanced collaboration between Architects & Developers

Westerport

Sjöbo, Sweden
Status: Concept Design



Gibraltarvallen

Gothenburg, Sweden
Status: Competition Design



Gibraltarvallen

Gothenburg, Sweden
Status: Competition Design

© Semrén & Månsson 2021



GoCo Lifescience

Gothenburg, Sweden

Status: Technical Design / Under Construction

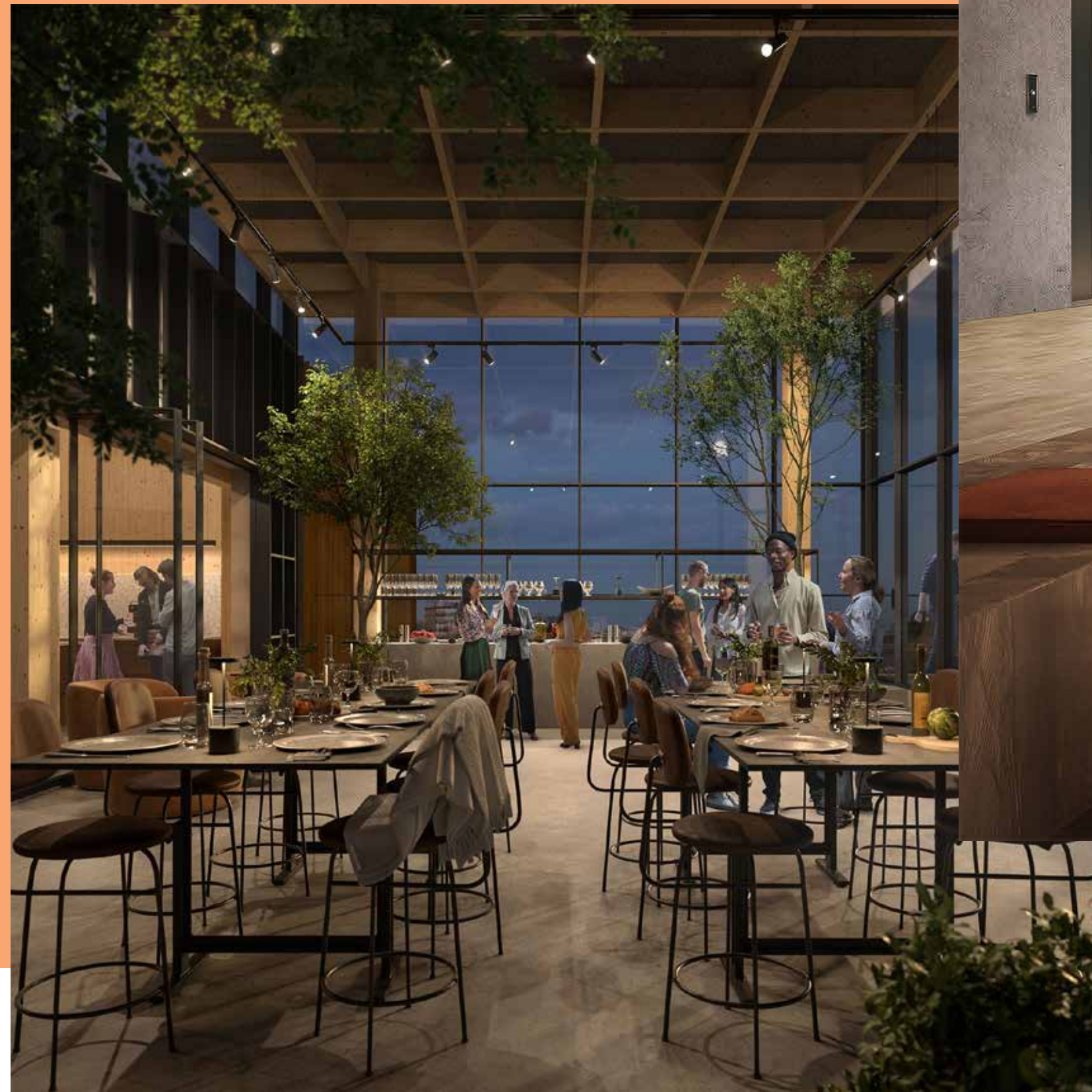


GoCo Lifescience

Gothenburg, Sweden

Status: Technical Design / Under Construction

© Semrén & Månsson 2021



Thank you

info@semren-mansson.se | semren-mansson.se

Semrén+
Månsson