



Climate-KIC



Nordic Council  
of Ministers

# Nordic Trends in Wood Construction

Nic Craig

02/03/2021

Climate-KIC is supported by the  
EIT, a body of the European Union

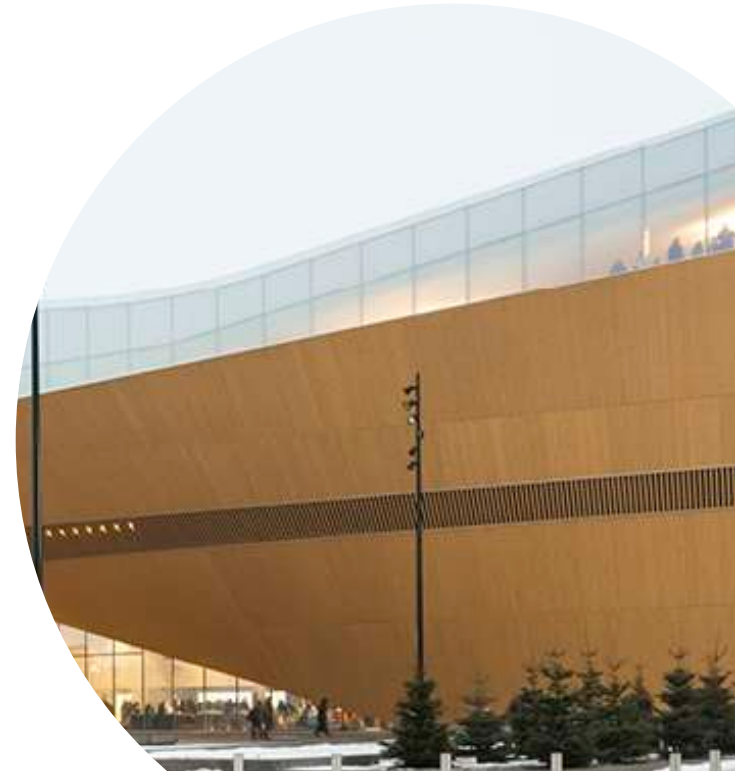


# Nordic Wood in Construction Secretariat

- Initiative set up by Swedish Government and Nordic Council of Ministers for 2018-20
- Aim: to help realise wood's full potential throughout the construction value chain

## Doing what?

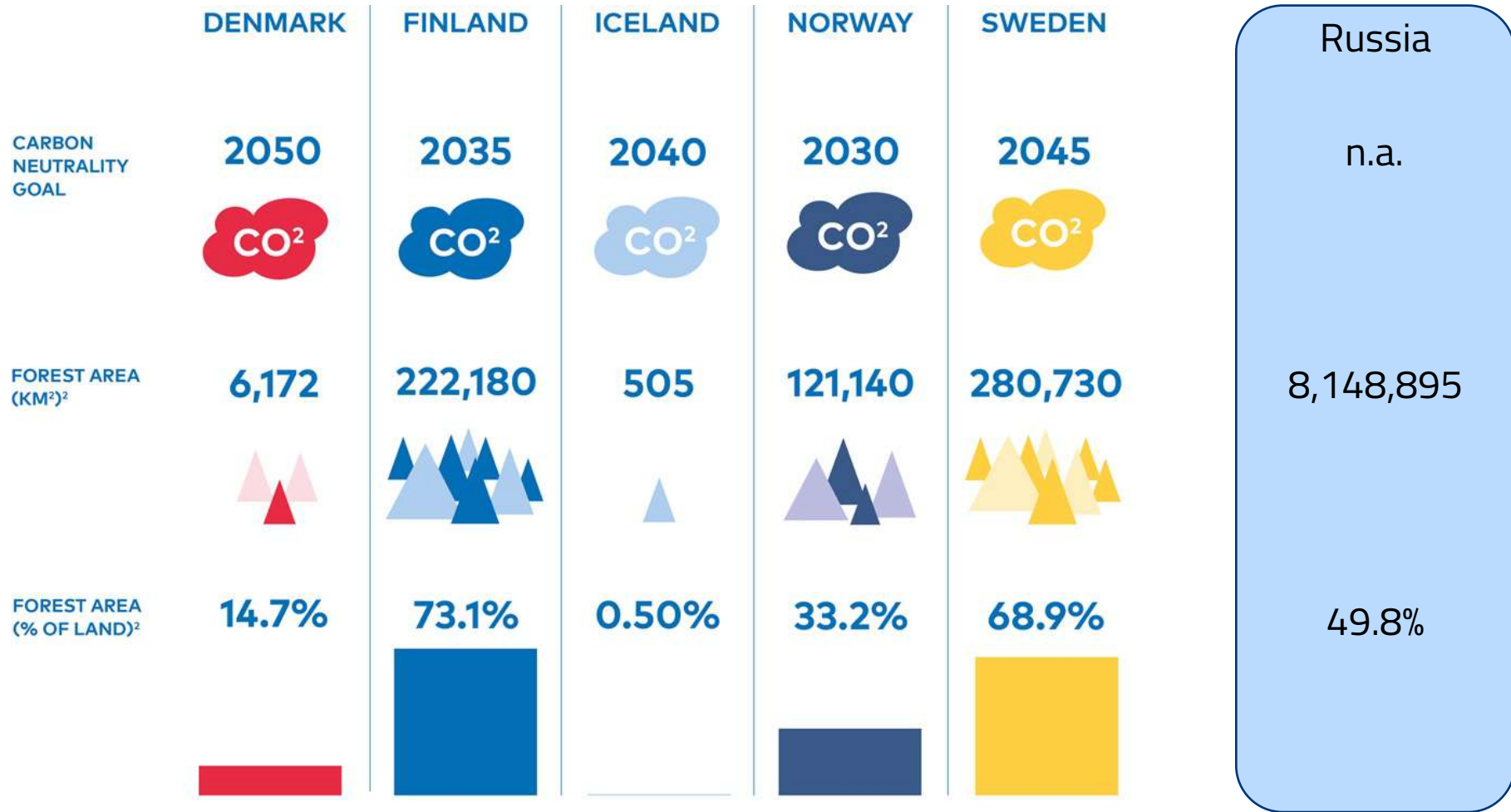
- Support further development of the use of wood in construction in Nordic countries through projects that:
  - **identify and break down barriers** to using wood in construction, **share knowledge**, and increase **Nordic cooperation**





# Status of Forests and Construction in The Nordics and Russia

---



DENMARK

FINLAND

ICELAND

NORWAY

SWEDEN

Russia

VOLUME OF  
TIMBER  
(MILLION M<sup>3</sup>)<sup>3</sup>

126



2,328



0.5



1,165



2,996



~82,000

ROUNDWOOD  
PRODUCTION  
(THOUSAND M<sup>3</sup>)<sup>4</sup>

3,483



68,289



4



12,822

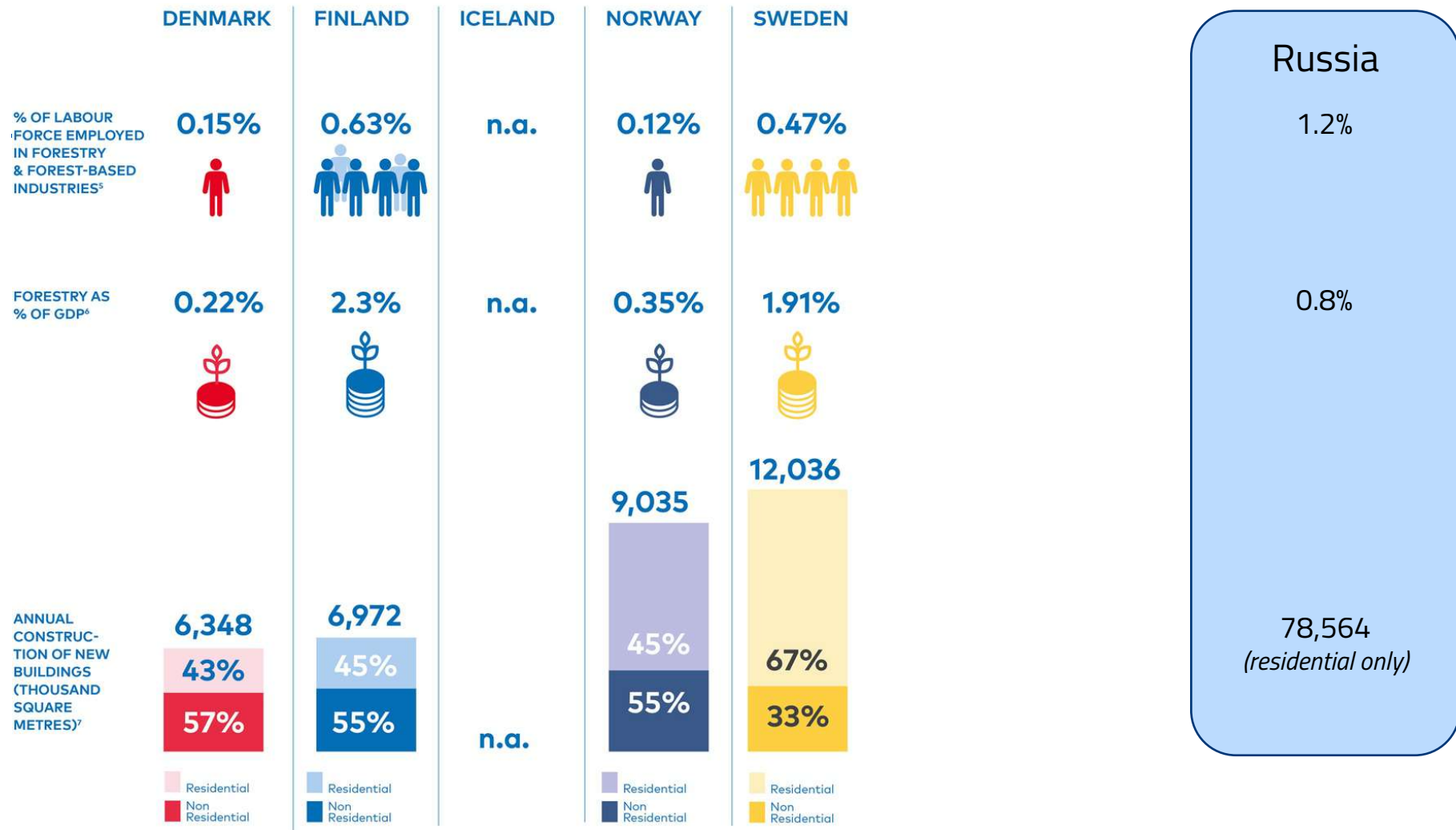


75,100



197,612





# Five Trends in Nordic Wood Construction

# Five trends in Nordic Wood in Construction today



Public Procurement & Local  
Government



National Regulations



Supplying a growing demand



Cross Supply Chain Collaborations



Circular design



# 1: Public Procurement & Local Government

Local governments are driving the wood in construction market in two main ways:

1. Public procurement (schools, hospitals, kindergardens, public housing etc.)
2. Strategies to increase local wood construction



## 2: National Regulations














In every Nordic country there is new policy coming for new buildings and their climate impact.

- This will need to be calculated using a LCA approach and declared
- The result will be more wood, due to its low climate impact.

✓ *Most Nordic countries now have targets and policies to increase the number of wood construction – the government wants to drive this change*



Strandparken,  
Stockholm, Sweden

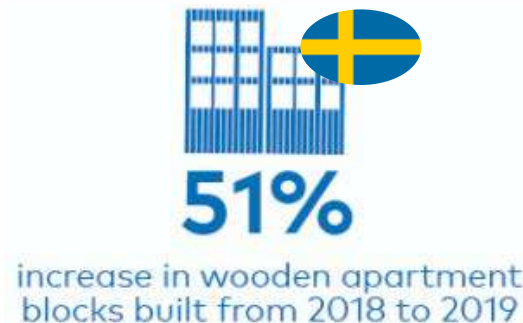
 Voluntary sustainability class test phase begins	2020
 Declaration requirement on emissions from production and construction phases (A1-S)	2022
 Sustainability class test phase ends	
 Sustainability class to become mandatory	2023
 Limits on lifetime building CO <sub>2</sub> introduced	2025
45% target of public construction in wood	
 Proposed limits on emissions from production and construction phases (A1-S); declaration requirement on phases B&C	2027
 Carbon Neutral	2030
70% emission reduction (1990 baseline)	
 Proposed 40% emission reduction from production and construction phases (A1-S) (2027 baseline)	2035
 Carbon Neutral	2040
 Proposed 80% emission reduction from production and construction phases (A1-S) (2027 baseline)	2043
 Carbon Neutral and Fossil Fuel Free	2045
 Carbon Neutral	2050
80-95% emission reduction (1990 baseline)	
 80% emission reduction (1990 baseline)	

### 3: Supplying a growing demand

Demand for all types of wood construction is growing rapidly in the Nordics

- However, production capacity for building elements (eg. CLT, glulam) cannot keep up with demand, so must be sourced elsewhere (Austria)

✓ *Multi-storey wood buildings are cost-competitive*



Valla Berså,  
Linköping, Sweden



## 4: Cross Supply Chain Collaborations

### Private Businesses

*Architects, Suppliers, Forestry, Contractors etc.*

Fulfilling and creating demand, jobs; delivering projects, materials and products

- Too many to list!

### Local Governments

*Municipalities and Regions*

Define strategies, promote local industries & jobs, customers!

- Skellefteå, Sweden
- Joensuu, Finland
- Trondheim, Norway

### National Governments

*Public authorities; Departments for construction, housing, environment etc.*

Setting building regulation and policy framework. Funding.

These stakeholders all **collaborate, cooperate and communicate** together

### Education

*Technical colleges & universities*

Build competencies both in industry and for the

- Luleå TU (Sweden)
- NTNU (Norway)
- Aalto University (Finland)

### Research & Development

*Research institutes & universities*

Material science, data to make decisions & policy

- RiSE (Sweden)
- Aalborg University (Denmark)
- NIBIO (Norway)

### 3<sup>rd</sup> Party Organisations

Define strategies, promote local industries & jobs,

- Nordic Wood in Construction Secretariat
- National Timber Associations
- Networks (formal & informal)
- Conferences

## 5: Circular design

A big benefit of wood is how it can be reused after its first “life”.

This changes the economic case for building in wood.

- Building components are designed to be disassembled, keeping wooden elements higher in the value chain in their second life
- New products to provide circular alternatives to traditional building materials.
- Companies are transforming wooden ‘waste’ from the construction industry into new products and services.



*Lisbjerg Bakke,  
Lisbjerg, Denmark*

More info...



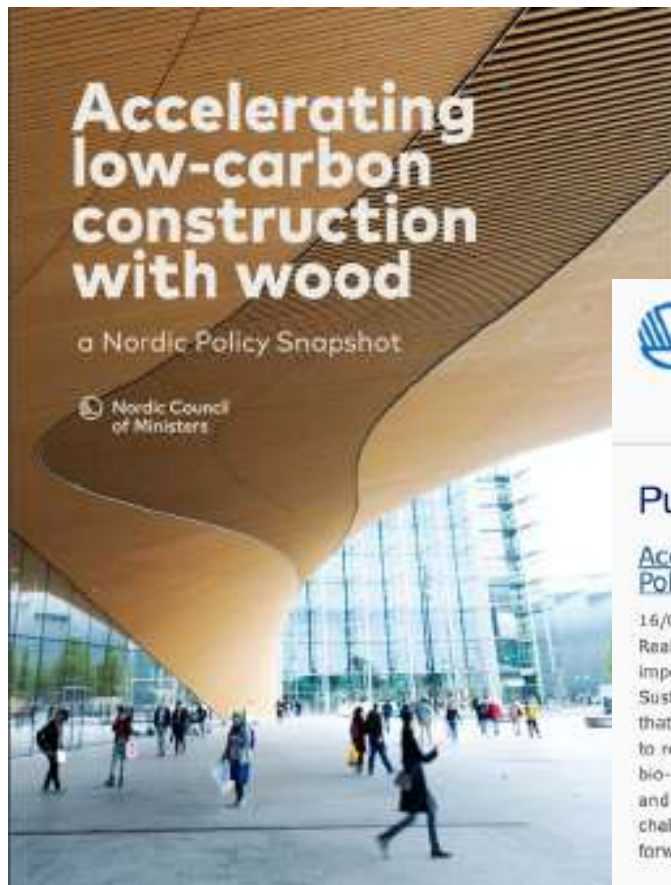
# For more Nordic inspiration... 25 cases of Nordic good practice

- Showcases 25 examples of Nordic projects from throughout the construction value chain working with wood in exciting and innovative ways.
- The aim is to **demonstrate the benefits and drivers** for building with wood, providing inspiration for the next generation of wood construction projects.

## WOOD IN CONSTRUCTION 25 CASES OF NORDIC GOOD PRACTICE



# For the latest Nordic Wood in Construction Policy Snapshot...



Nordic  
Co-operation

## Publications

### [Accelerating low-carbon construction with wood – a Nordic Policy Snapshot](#)

16/01/2021

Realising the Nordic vision of a carbon-neutral and circular built environment will be all but impossible without addressing the emissions from construction materials and processes. Sustainably sourced wood, as the only major renewable building material and a resource that the Nordic region has in abundance, has the potential to make a significant contribution to reducing carbon emissions from construction, supporting the shift towards a circular and bio-based economy. This publication gives an overview of the policies and initiatives helping and hindering progress in wood in construction in each Nordic country, identifying joint challenges and opportunities, and posing six questions that must be addressed going forward.



Climate-KIC



Nordic Council  
of Ministers

Спасибо!  
Thank you!

**I will post links and contact details in the chat**

[nic.craig@woodinconstruction.net](mailto:nic.craig@woodinconstruction.net)

[www.woodinconstruction.net](http://www.woodinconstruction.net)

Climate-KIC is supported by the  
EIT, a body of the European Union



@BuildWoodNordic

**Wood <sup>IN</sup> Construction**