



## How are health and well-being integrated into city planning?

"We have a unique opportunity to understand how greenspace accessibility and design are linked to our health and well-being, and how to integrate this knowledge into municipal planning processes", explains **Ryan Weber**, the leader of the new NORDGREEN project.

NORDGREEN (Smart Planning for Healthy and Green Nordic Cities) will create new knowledge and tools to make planning processes more integrated within municipal planning structures together with 5 partner cities: Täby, Stavanger, Espoo, Ii and Vilhelmina. Across the fields of epidemiological research, environmental psychology, citizen engagement and collaborative governance processes, these tools will help to develop the evidence base about the linkages between health and well-being and public greenspace.

Data is also collected from the citizens themselves by using a mapping survey tool called Maptionnaire. In these surveys, the citizens are able to pinpoint on the map their meaningful places nearby and suggest development targets. The first survey has just been conducted in Espoo and it was a success. The next cities in line to do the surveys are Ii, Stavanger, and Vilhelmina.

- We are able to test and develop new planning tools that will not only benefit them but will be available to all municipalities, Weber summarizes.

Nordregio is leading the project and it is funded by NordForsk. If you wish to follow the project, please visit the website and sign up for the project newsletters to get event invitations and more information.

## **Espoo breaking records: over 6000 citizen replies when mapping development**

The MyESpoo survey resulted in one of the largest, if not the largest, PPGIS data sets ever gathered in Finland, with over 6000 respondents and 70 000 mappings. The survey results shed light on peoples' everyday place networks, public places that are important to them, possible new places for housing and development, and their perceived health and well-being. The results will provide key information for researchers in the NORDGREEN project, where citizen well-being will be closely integrated into Espoo's city planning processes.

The survey was conducted by researchers from Aalto University, in collaboration with planners at the City of Espoo. The survey was distributed as both an open survey and an invite-based survey with random sampling, and it was also aimed at youth and was completed by students in schools throughout Espoo. The survey results will also be used in Espoo planning projects and as a starting point for the new master plan process for Espoo.

In addition to the survey in Espoo, researchers at Aalto University and at Nordregio are currently developing similar map-based surveys that will be deployed in the Municipalities of Ii in Finland, Stavanger in Norway, and Vilhelmina in Sweden during 2021.

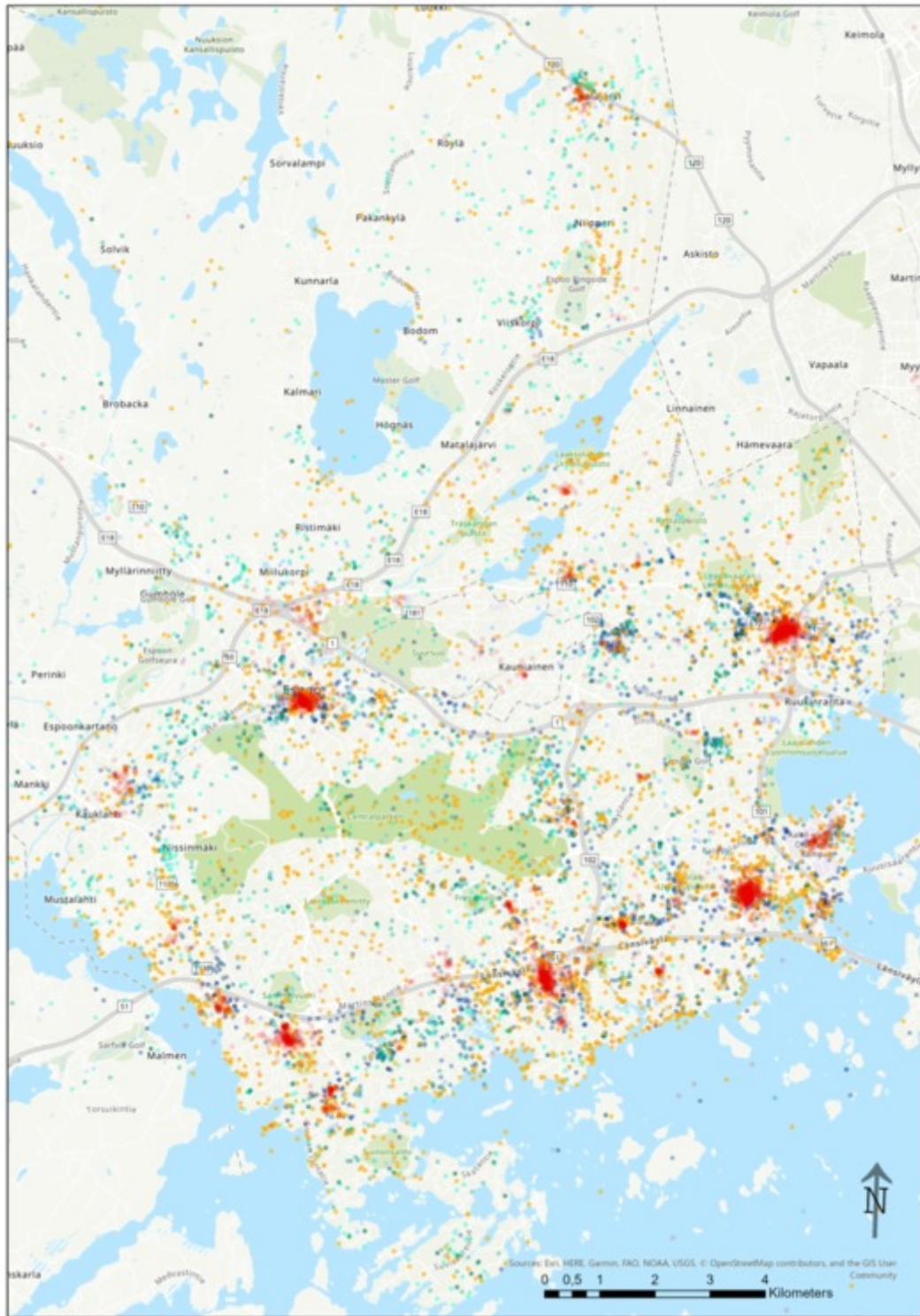
### **Professor Marketta Kyttä**

*"The collaboration with the city of Espoo in the PPGIS data collection has been exceptionally fruitful and devoted. I am looking forward to the analysis of the survey results and the collaboration with our multidisciplinary, Nordic network. Together we have already identified ten different topics that we can familiarize ourselves with - there are probably still more fascinating topics to come!"*

#### **- Marketta Kyttä**

Professor of Land Use Planning  
Department of Built Environment  
Aalto University, Finland





Development areas found via MyEspoo survey, by Saana Rossi, Aalto University.



## Quick tour around NORDGREEN

NORDGREEN is working with existing planning projects in the following Nordic cities: Espoo, Ii, Stavanger, Täby and Vilhelmina. This brochure will explain in a nutshell:

[Visit brochure](#)



## Sign up for news

This project has just started and if you wish to follow the progress and get information, please sign up for the newsmails on the website.

[Visit NORDGREEN website](#)



*You receive this email because you have subscribed to Nordregio Magazine or other thematic subscription lists - or joined an event organized by Nordregio.*

### Nordregio

Holmamiralens Väg 10  
Skeppsholmen  
Stockholm

Phone: +46 8 463 54 00

E-mail: [nordregio@nordregio.org](mailto:nordregio@nordregio.org)



[Show in webbrowser](#)

[Unsubscribe](#)