



# TANGO-W

Transformative capacity in energy-food-water

## Halden pilot – Food waste reduction in kindergartens

Hilde Marie Wold, Municipality of Halden

Webinar no. 2 | 16th of April 2024

# Pre Tango-w project

- 2019: Start-up company developing and testing an app for controlling the food streams in different institutions
- 2 kindergartens participated – one succesful and one unsuccessful implementation

How could we implement food waste reduction in all 4 municipal kindergartens, successfully?



# Project Plan

Halden Municipality wants to cut down on food waste and energy use related to food production and consumption through several actions:

1. See how digital monitoring of food items (inventory, expiration dates, menu suggestions) or other services affects consumption and food waste, and
2. Make it easier to consume locally produced food (establish processes that simplify and make the entire value chain more predictable, "from farm to table").



ULL: Kindergarten in Halden



# On-boarding kindergartens: The Challenges

- Reformulating the top-down order from the city in bottom up needs of kindergarten manager and staff
- -> We solved it! Let me tell you how.

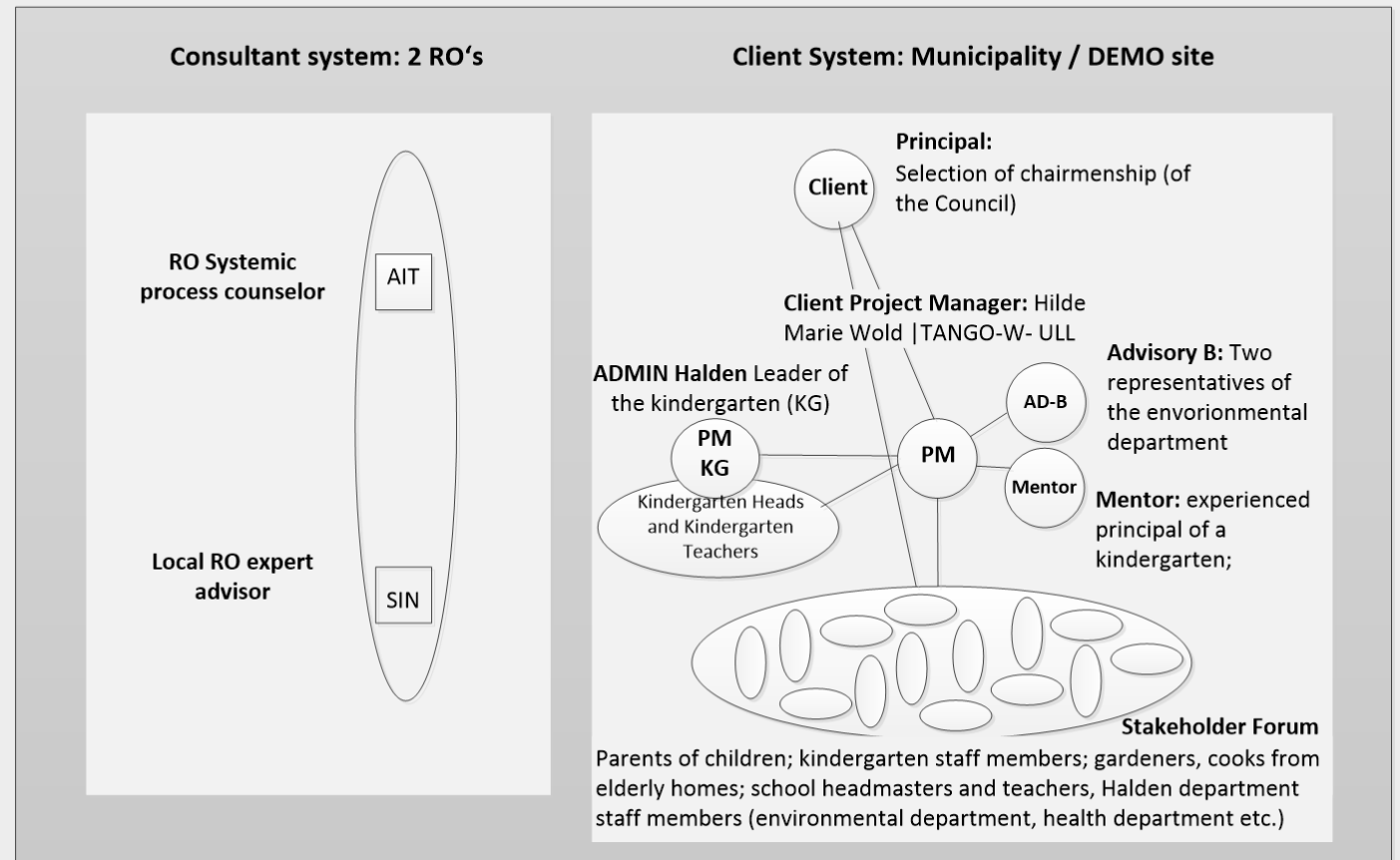


# Current situation

## Social Architecture:

- Adding the environmental department and the need for a food waste strategy
- Negative arguments were met with a higher vision -> better food and less food waste (better budget)
- Participants wants to learn – but within own defined framework

## HALDEN - TRANSFORMATION Room



# Timeline

Kick off 29/8-23

2. Sharing knowledge

4. Sharing knowledge g



1. Sharing knowledge

3. Sharing knowledge

Show-off 26/9-24

Contribution to the UN International day of awareness of Food Loss and Waste



# Good cooperation base to the internal sustainability group

- Building up a good cooperation base to the internal sustainability group
- Cooperation with SIN throughout several projects previously



# Good cooperation base to the external researchers SIN/AIT

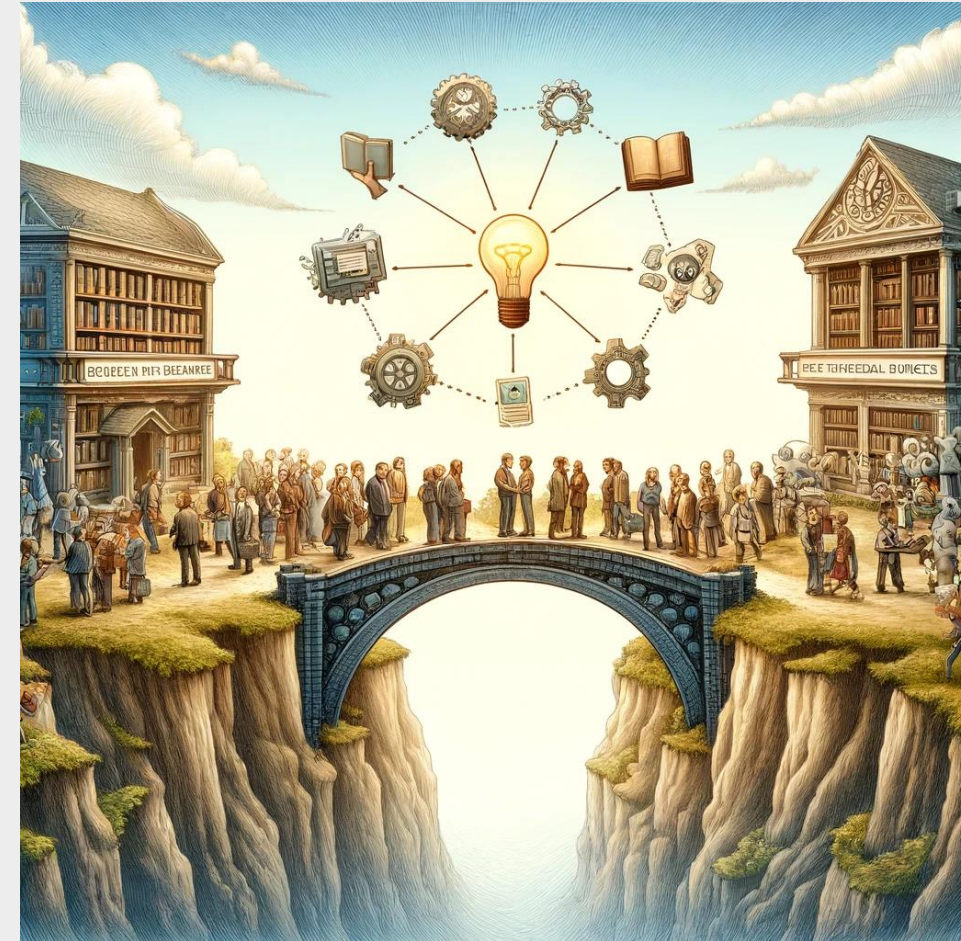
- Takes time
- Understanding of different roles and project focus
  - Support and guiding





# Good cooperation base to the external researchers SIN/AIT

- Success criteria:
  - Building bridges between research and the public processes
  - Translator between different roles
  - Support and extended capacity
  - Knowledge in the project
  - Common background – known environment





# TANGO-W

Transformative capacity in energy-food-water

THANK YOU!

Hilde Marie Wold

Email: [hilde.marie.wold@halden.kommune.no](mailto:hilde.marie.wold@halden.kommune.no)

Mobil: +47 979 75 330





# URBAN EUROPE



This project has received funding from the European Union's Horizon 2020 research and innovation programme under grant agreement No 101003758