



Klagenfurt on the way to climate neutrality by 2030

TANGO-W Webinar 09.04.2024

Stefan Guggenberger

Climate and Environmental Protection Department, IPAK GmbH, State capital Klagenfurt on Lake Wörthersee

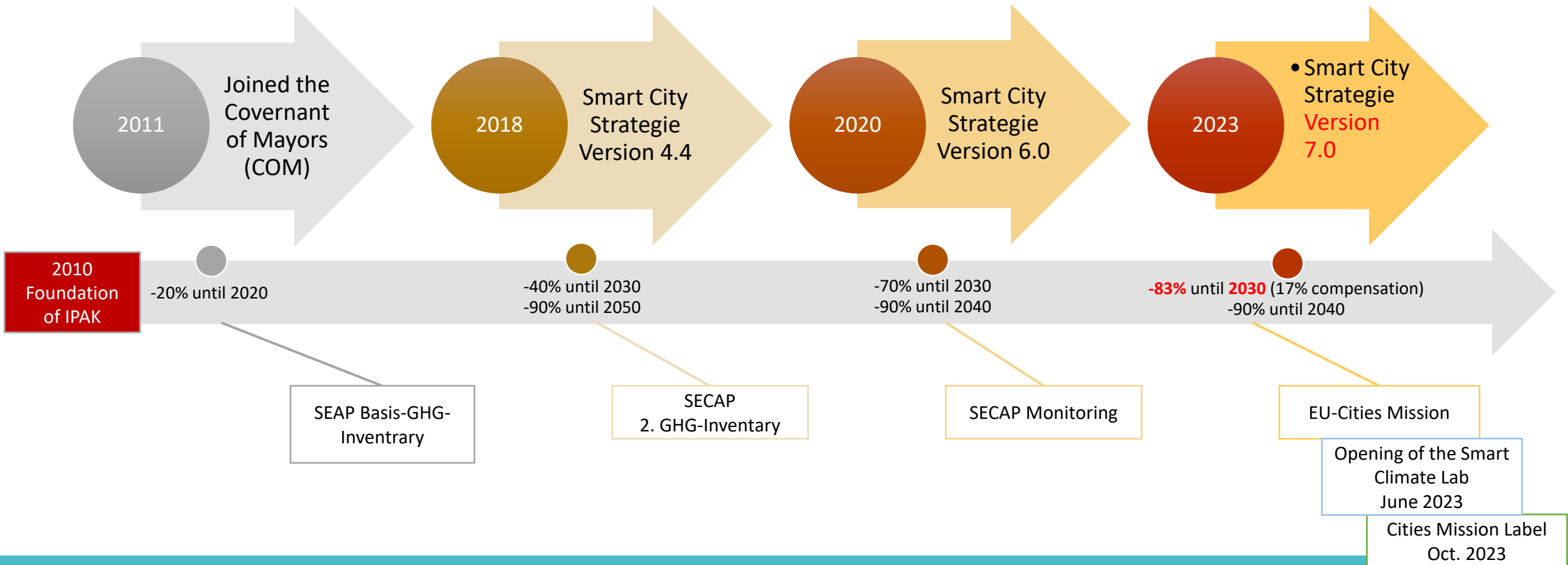
Klagenfurt on Lake Wörthersee



- 104,000 inhabitants
- 160,000 daytime population
- 120 km²
- Capital of Province of Carinthia
- Trade and school center of the region
- Center quite densely populated
- Forests and agricultural land

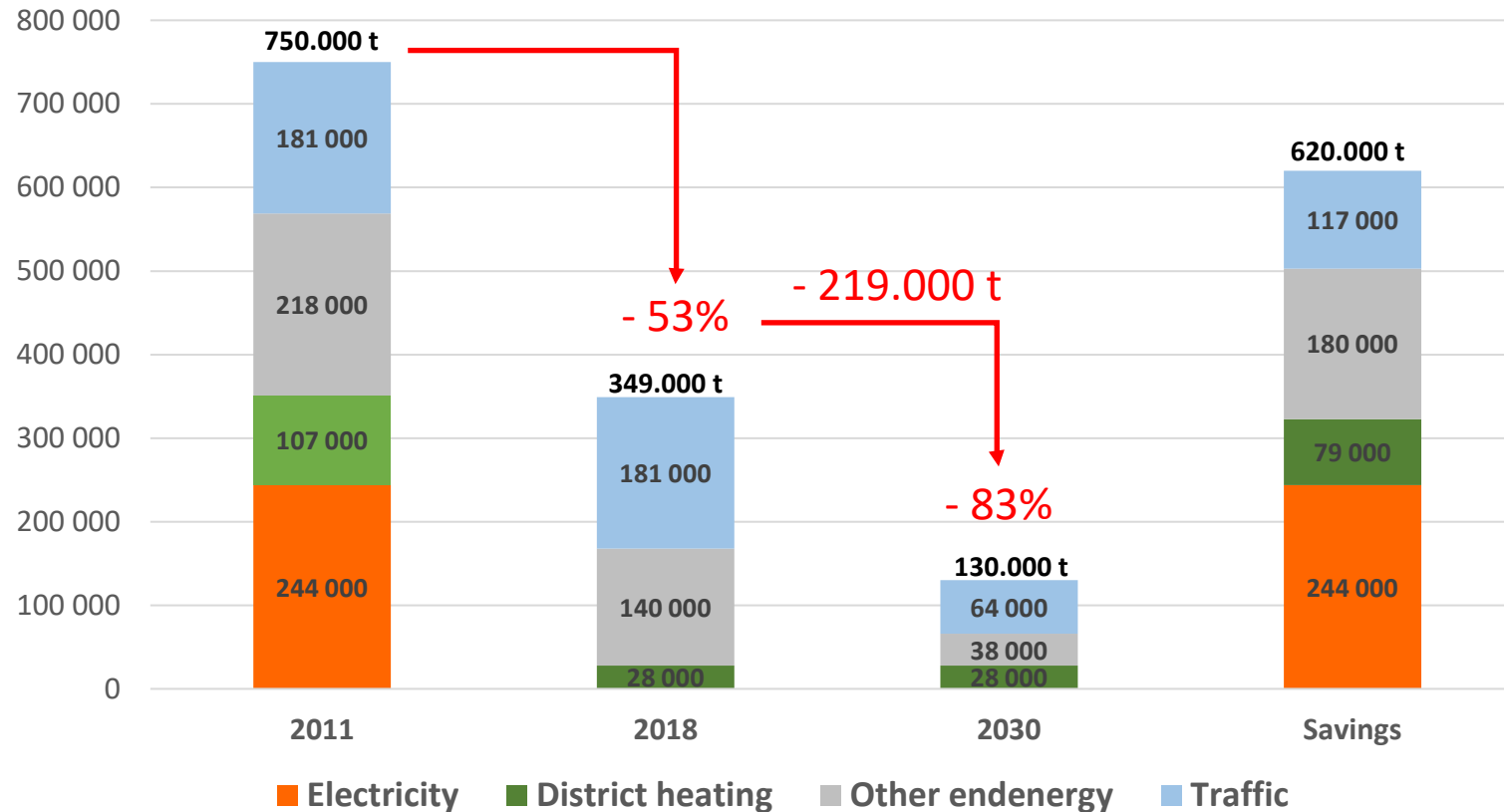


Timeline Climate Protection Goals



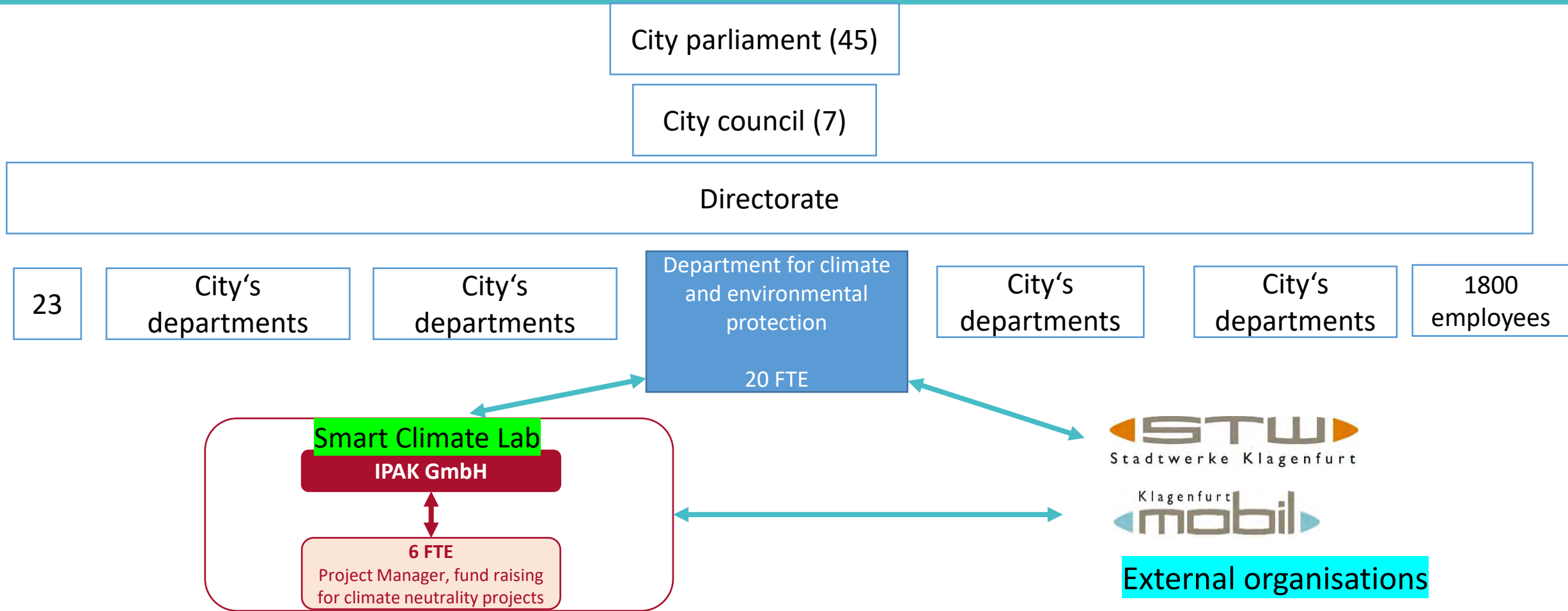
Path to climate neutrality 2030

GHG Emissions and savings 2011 - 2018 - 2030 [tCO₂]

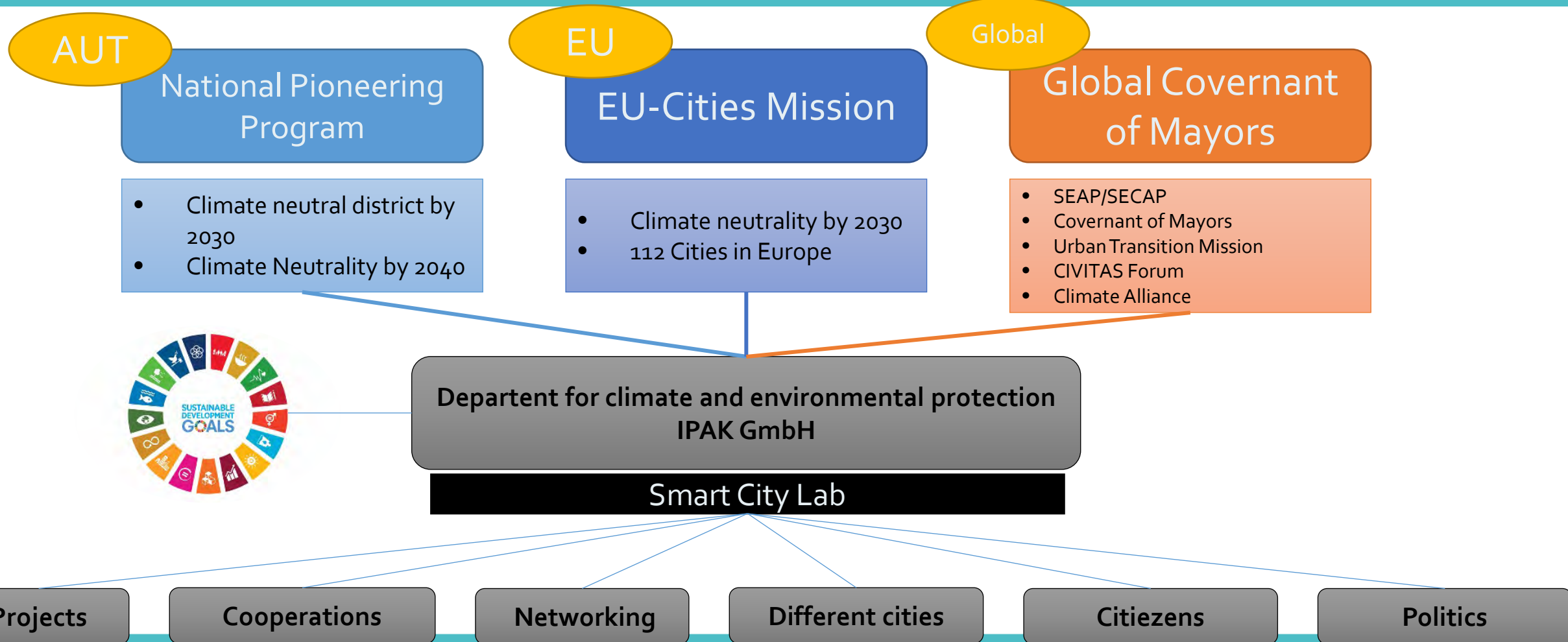


New inventory with dates from 2021 currently being developed

The administrative (department) structure



Embedding the city



How do we implement?

→ Smart City and climate strategy version 7.0

Vision

Smart City Klagenfurt on Lake Wörthersee is an emissions-neutral, energy-efficient and resource-saving living space with a high urban quality of life and responsible citizens, which is very well networked in the Alps-Adriatic region

Klagenfurt climate protection goals

-83% CO₂ (direct), -17% CO₂ (compensation) by 2030

-90% CO₂ by 2040

- 1 Core Team (City und STW)
- 9 Fields of action
- 9 Working groups
- 58 Experts
- 236 Measures

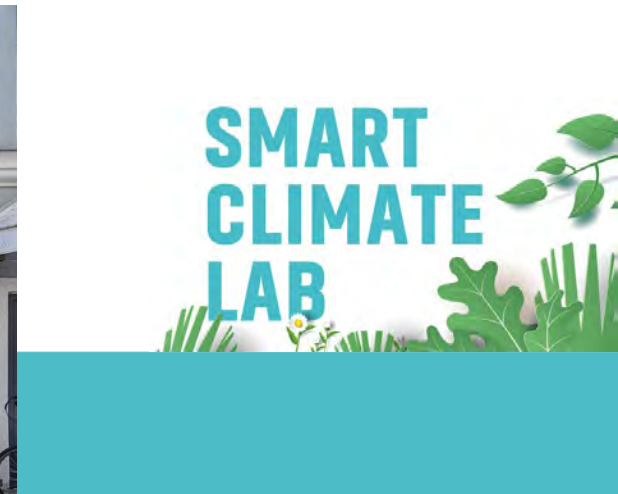
At the same time, a good quality of life for the population and future generations should be further improved and sustainably secured.



Smart Climate Lab Klagenfurt

Citizens' Office – Inner City contact point for companies, organizations and citizens for all topics relating to climate protection and the way towards climate neutrality by 2030 and beyond.

- Information point for climate-neutral and smart project ideas
- With employees trained in (funding)project management, it is possible to carry out pilot projects and test innovations.
- Acts as a contact point for cooperation partners
- Various workshops and events take place here. The city's youth council also plays a central role
- 5 full-time equivalents

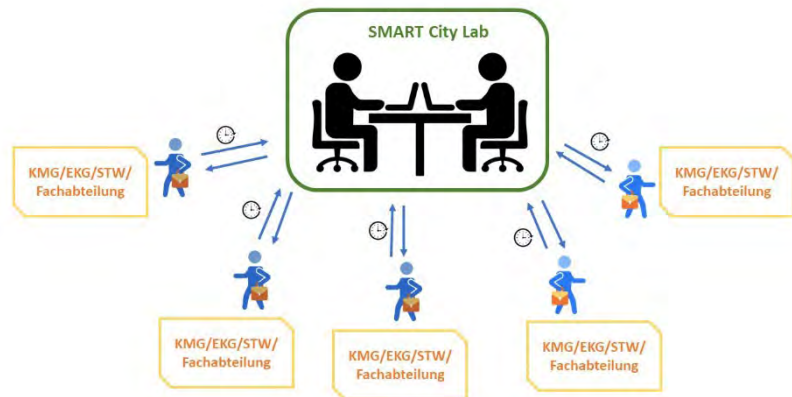


**SMART
CLIMATE
LAB**

Governance innovation

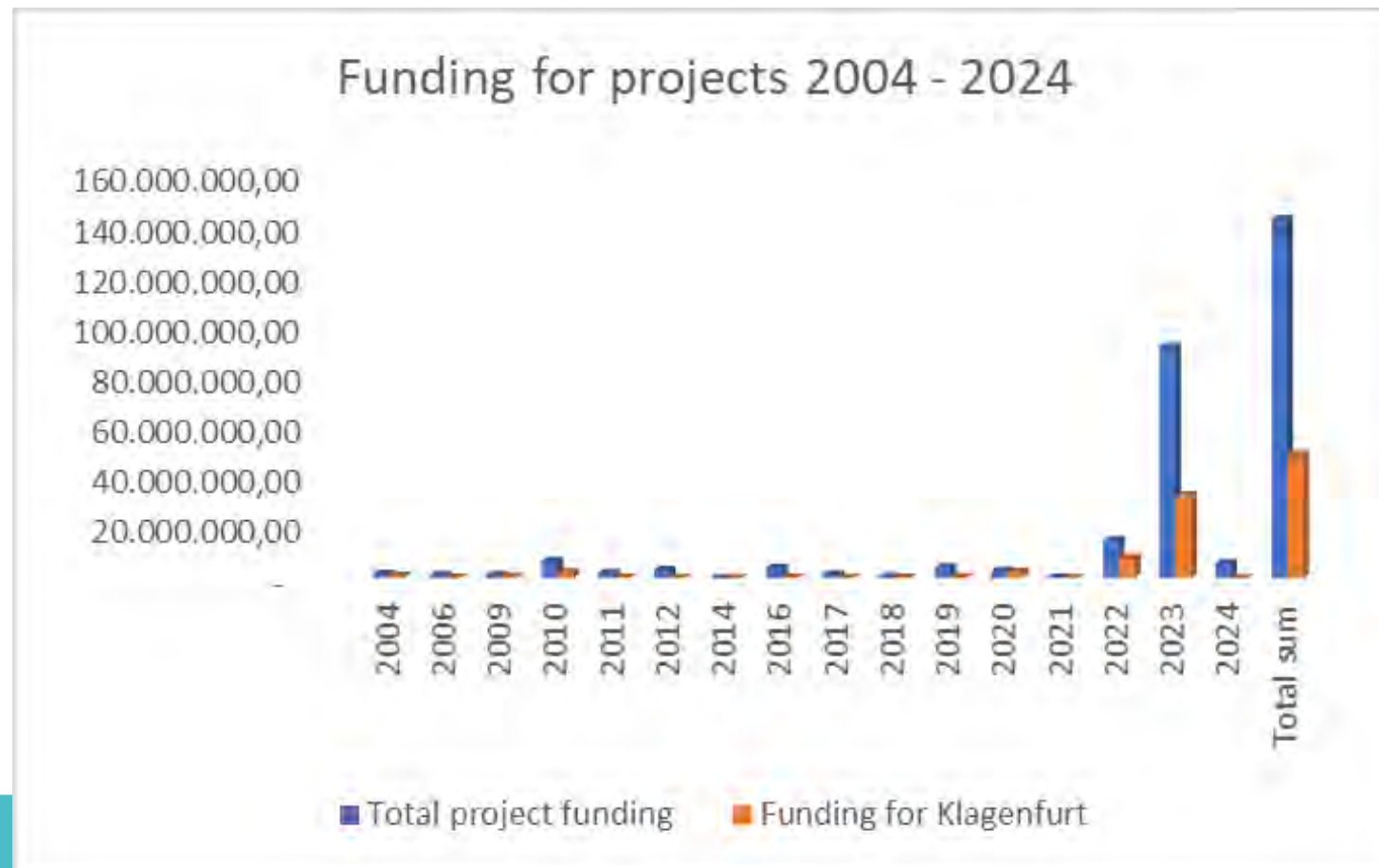
Involving stakeholders is an essential part of pursuing climate protection in private areas that are not within the city's direct sphere of influence.

- Involvement of stakeholders in the course of Lols and subsequently climate protection agreements
- Support from stakeholders through involvement in the Climate City Contract process.
- Project development with stakeholders and support offer
- Development and signing of the first climate protection contracts with SPAR, Joanneum Research, AvantCar
 - Ongoing integration of other companies, NGOs, etc



Project implementation

➤ Funding for projects from 2004 – 2024



Urban Living Lab Harbach



TANGO-W
Transformative capacity in energy-food-water



New Smart City District with the focus on climate neutral development for ~ 2.000 residents

- Active support in the establishment and implementation of a renewable energy community
- Networking and bringing together the necessary stakeholders
- Building the necessary skills and know-how on the topic of REC for the Smart Climate Lab.
- Scaling RECs in the urban are of Klagenfurt



Summary

- Climate protection and sustainability in a city administration requires new skills in interdisciplinary collaboration
- This requires breaking out of the silo mentality and silo thinking of individual city departments.
 - Smart City and Climate Strategy (integration of all departments in sustainable city development)
- We now have new employees in Klagenfurt who are trying to use the Smart Climate Lab to take up topics from the different departments and prepare them for funding projects
 - Identifying climate relevant projects out of different departments, and develop funding projects
- Funding projects based on European initiatives and guidelines bring know-how, innovation and, last but not least, needed capital to Klagenfurt
- The administration is currently undergoing a change towards sustainability and climate protection



Thank you for your attention

